

5

4

3

2

1

DRAWING NO.
19-1702-CUST

REVISIONS

01	OFFICIAL RELEASE				2009.09.1
	08-05-09	W	Y	T	H

Betty 5:14:08:50
+0800

Description: RCA Female Inline Adaptor

Part No: 19-1702

Application: Adapter

Crimp Tool: N/A

Impedance: N/A

Frequency Range: N/A

Material: Body Brass Nickel Plated

Shell PVC Black

Insulation Bakelite Yellow

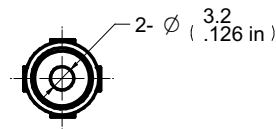
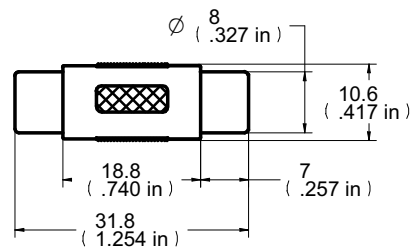
RoHS Compliance: Yes

Technical Detail: N/A



受控 CONTROLLED DOCUMENT

编号 P/N	19-1702-CUST	版本 Rev	01	日期 Rel'd Date	SEP 19,09
-----------	--------------	-----------	----	------------------	-----------

**DIM OUTLINE**

CUSTOMER COPY

TOLERANCE UNLESS OTHERWISE SPECIFIED		DRAWN BY IVON.W	DATE 08-05-09
DECIMALS	mm	CHECKED BY BETTY.YU	DATE 08-05-09
X	± 0.5	APPROVED BY THOMAS	DATE 08-05-09
X.X	± 0.3		
X.XX	± 0.1		
ANGLES	± 0.5°	U/M	mm

TITLE
RCA FEMALE INLINE ADAPTORSHEET 1 OF 1
DRAWING NO. 19-1702-CUST
SIZE ATHIS DRAWING WAS PRODUCED BY COMPUTER,
DO NOT SCALE DRAWING OR UPDATE MANUALLY.

5

4

3

2

1