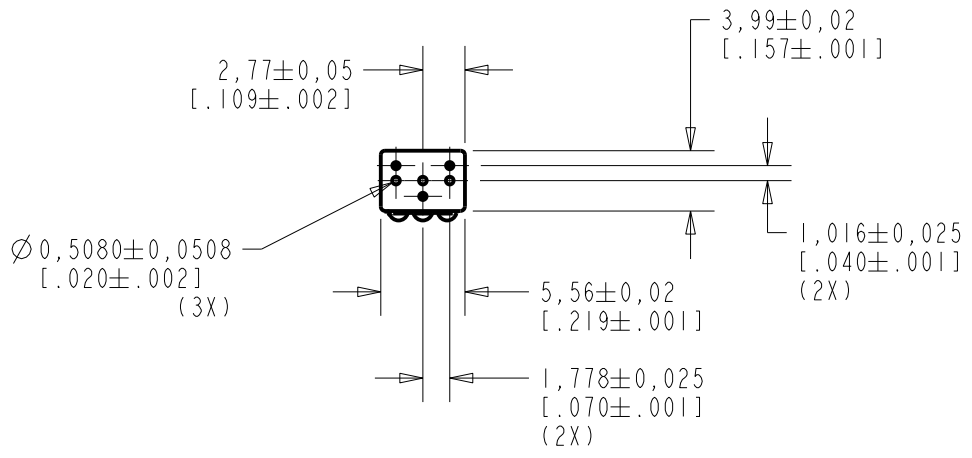
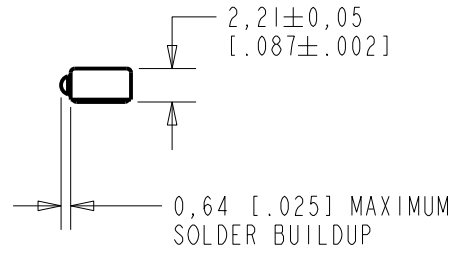
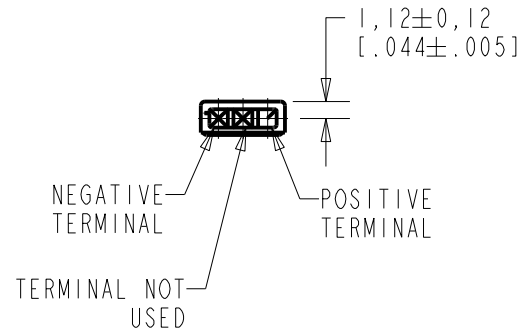


**NR-23160-000**  
SHT 1.1

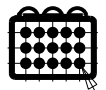


**NOTE:**

1. INCREASED PRESSURE AT THE SOUND INLET CAUSES A POSITIVE GOING VOLTAGE TO APPEAR AT THE OUTPUT TERMINAL, RELATIVE TO THE NEGATIVE TERMINAL.



NOMINAL WEIGHT  
.13 GRAM



Ø 0,508±0,025  
[.020±.001]  
(15X)

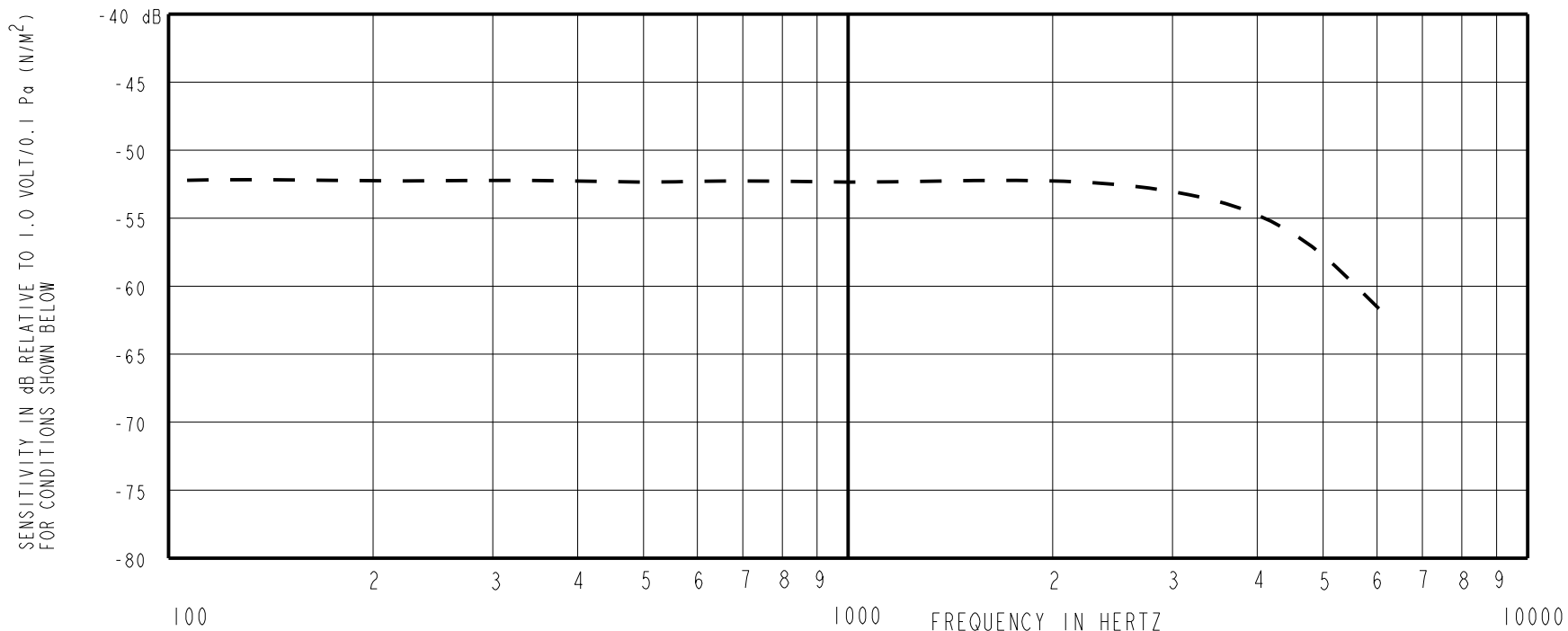
DIMENSIONS IN MILLIMETERS [INCHES]

**KNOWLES ELECTRONICS**  
ITASCA, ILLINOIS U.S.A.

Revision	C.O. #	Implementation Date	RELEASE LEVEL	REVISION
			<b>Active</b>	<b>D</b>
D	MI0104725	7-06-12		

SCALE: <b>2:1</b>		DR. BY	DATE
DO NOT SCALE DRAWING		DMS	06/07/05
TITLE: <b>MICROPHONE</b>		CK. BY	DATE
OUTLINE DRAWING		GJP	06/09/05
<b>NR-23160-000</b>		APP. BY	DATE
<b>SHT 1.1</b>		GJP	06/09/05

NR-23160-000  
SHT 2.1

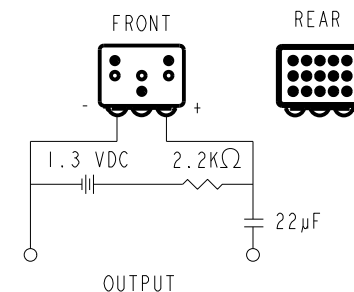


FREQUENCY	SENSITIVITY			DEVICE CONFORMITY	
	MIN.	NOM.	MAX.	RANGE OF DEVIATION FROM 1 KHz	
100	---	-52.0	---	-2.0	+2.0
1000	-55.0	-52.0	-49.0	0.0	0.0
4000	---	-55.0	---	-6.0	0.0

NOTES:

- CASE CONNECTED TO NEGATIVE TERMINAL.
- MICROPHONE TO BE FUNCTIONAL WITH 10 VDC SUPPLY.
- SENSITIVITY VALUES INDICATED ON THIS SPECIFICATION ARE VALID AT 50% HUMIDITY.
- PRESSURE DIFFERENCE SENSITIVITY TESTED WITH REAR SOUND PORT SEALED TO AIR VOLUME OF AT LEAST 0.5 CC.

DC SUPPLY	AMPLIFIER CURRENT DRAIN	OUTPUT IMPEDANCE OHMS		
		MIN.	NOM.	MAX.
1.3V	200µA MAX.	1500	2500	3500



VL MODE	VL SPEC
2 WIRE	-
3 WIRE	0.15V-0.90V

Revision	C.O. #	Implementation Date	RELEASE LEVEL	REVISION
D	MI0104725	7-06-12	Active	D

**KNOWLES ELECTRONICS**  
ITASCA, ILLINOIS U.S.A.

SCALE: 2:1	DR. BY DATE
DO NOT SCALE DRAWING	DMS 06/07/05
TITLE: MICROPHONE	CK. BY DATE
NR-23160-000	GJP 06/09/05
PERFORMANCE SPECIFICATION	APP. BY DATE
SHT 2.1	GJP 06/09/05