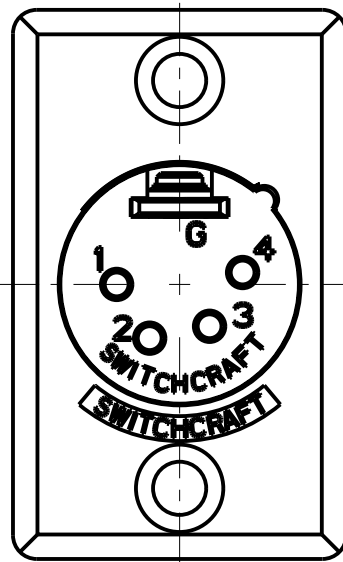
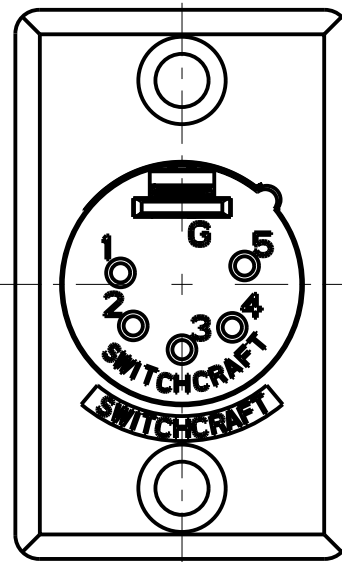


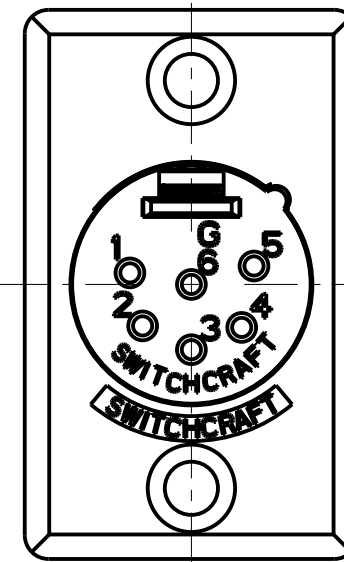
3 PIN



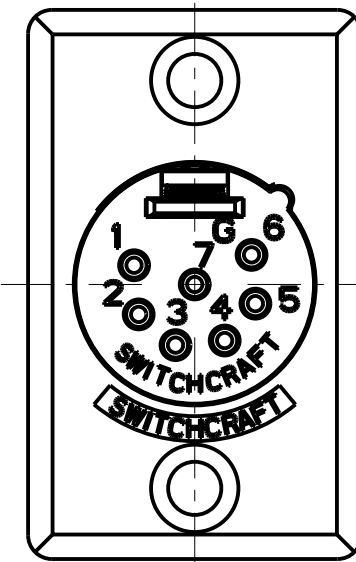
4 PIN



5 PIN



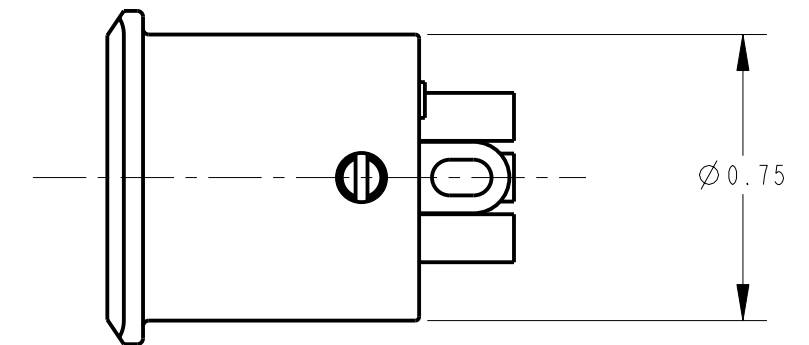
6 PIN



7 PIN

NOTES:

1. ALL DIMENSIONS REF. UNLESS OTHERWISE SPECIFIED.



**STANDARD SERIES**

SCREW - STAINLESS STEEL  
 HOUSING - ZINC, NICKEL PLATED  
 SOLDER TERMINAL - BRASS, ELECTRO TIN PLATED  
 INSULATOR - POLYESTER, GREEN (UL94V-0)  
 CONTACT PIN - BRASS, SILVER PLATED

CONTACT PLATING  
 BLANK = SILVER (STANDARD)  
 AU = GOLD

HOUSING FINISH  
 BLANK = NICKEL PLATE (STANDARD)  
 B = BLACK  
 S = SANDED

NO. OF CONTACTS:  
 3 = 3 CONTACTS  
 4 = 4 CONTACTS  
 5 = 5 CONTACTS  
 6 = 6 CONTACTS  
 7 = 7 CONTACTS

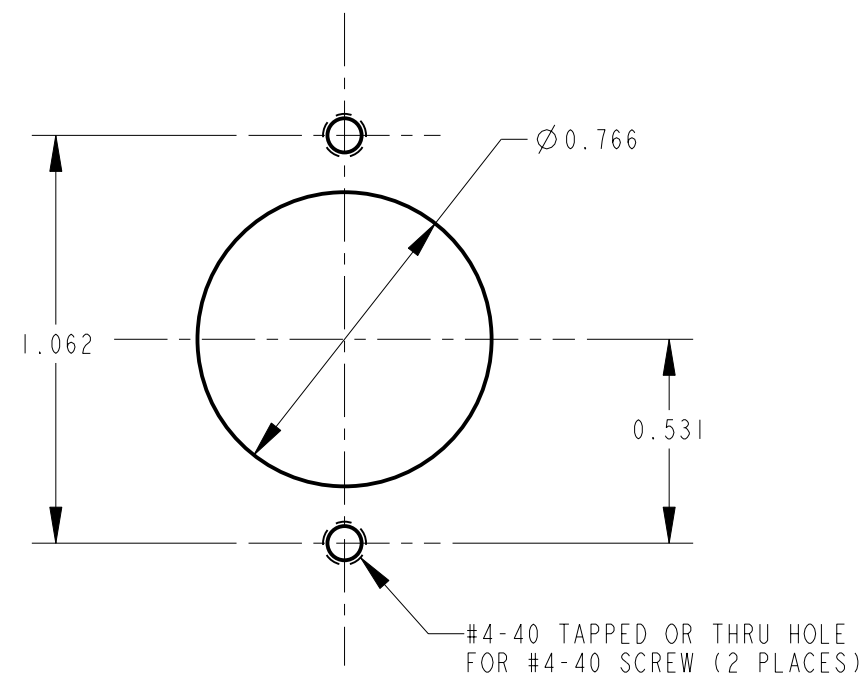
---

**PROFESSIONAL SERIES**

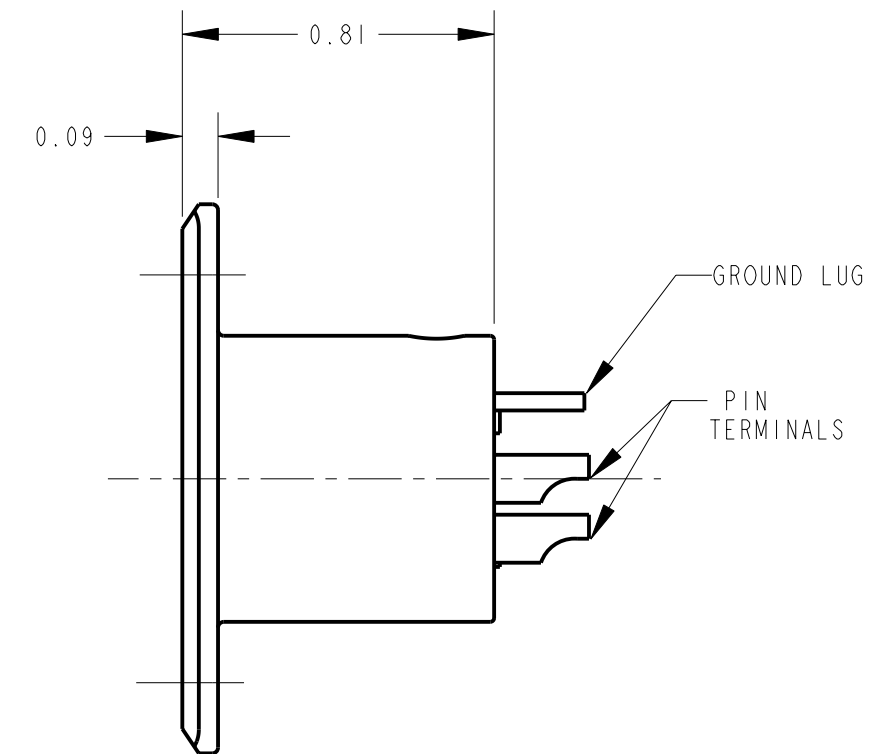
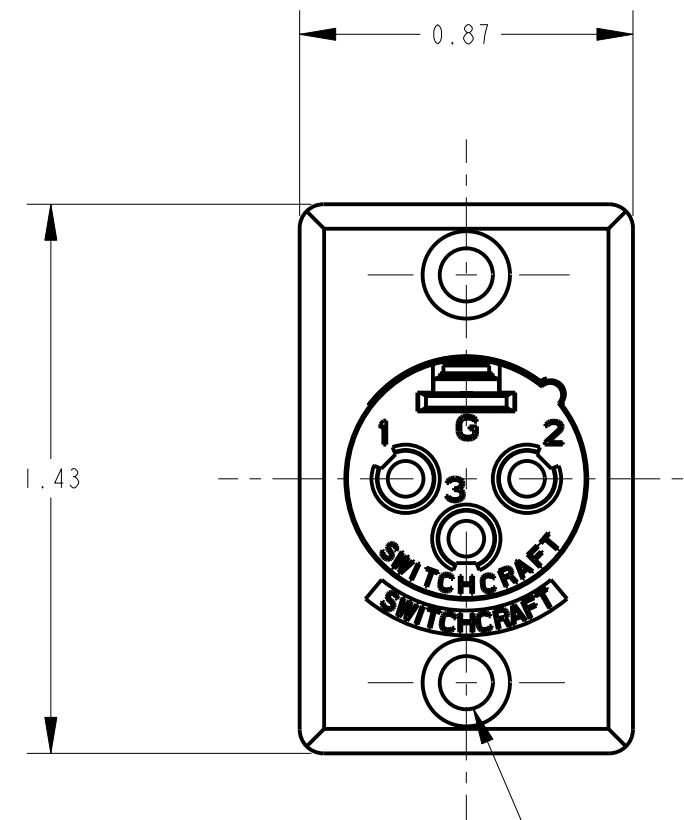
SAME AS ABOVE EXCEPT  
 CONTACT PIN - PHOSPHOR BRONZE, GOLD OVER NICKEL

QGP - 63

NO. OF CONTACTS:  
 3 = 3 CONTACTS  
 4 = 4 CONTACTS  
 5 = 5 CONTACTS  
 6 = 6 CONTACTS  
 7 = 7 CONTACTS



RECOMMENDED  
 PANEL CUT-OUT



CUSTOMER DRAWING

|           |       |         |    |    |   |  |                            |                  |          |         |          |
|-----------|-------|---------|----|----|---|--|----------------------------|------------------|----------|---------|----------|
| G         | 20745 | 2-22-96 | SG | SG | ★ STAR SYMBOL DENOTES CRITICAL DIMENSION  | THIS DRAWING DESCRIBES A DESIGN CONSIDERED PROPRIETARY IN NATURE, DEVELOPED AND MANUFACTURED BY SWITCHCRAFT INC. AND IS RELEASED ON A CONFIDENTIAL BASIS FOR IDENTIFICATION PURPOSES ONLY. | SIZE                       | WIDTH            | MULT     | LBS/M   | TEMPER   |
| F         | 20627 | 1-31-96 | SG | SG |   |  | UNLESS OTHERWISE SPECIFIED | FINISH           | SCALE    |         | MATERIAL |
| E         | 20543 | 1-5-96  | SG | RB | 1. ALL DIMENSIONS IN INCHES<br>- TWO PLACE DECIMALS ±0.01<br>- THREE PLACE DECIMALS ±0.005<br>- ANGLES ±1°<br>- ALL DIA. CONCENTRIC WITHIN 0.005 T.I.R. | SPEC No.   | 2:1                        |                  | SPEC No. |         |          |
| K         | 22838 | 10-1-99 | JL | DG | 2. FEATURES ON THE SAME CENTERLINE MUST BE ALIGNED WITHIN ±0.002  | FIRST USED ON  |                            | DATE DRAWN       |          | BY      |          |
| J         | 21070 | 1-15-97 | SG | KS | 3. REMOVE ALL BURRS   | 00-000-98  |                            | SG               |          | 8-15-94 |          |
| H         | 21035 | 1-15-97 | SG | KS | DO NOT SCALE DRAWING  | NAME   |                            | D SERIES MALE QG |          | REV     |          |
| REVISIONS |       |         |    |    |   | D SERIES MALE QG   |                            | D_M SERIES       |          | K       |          |